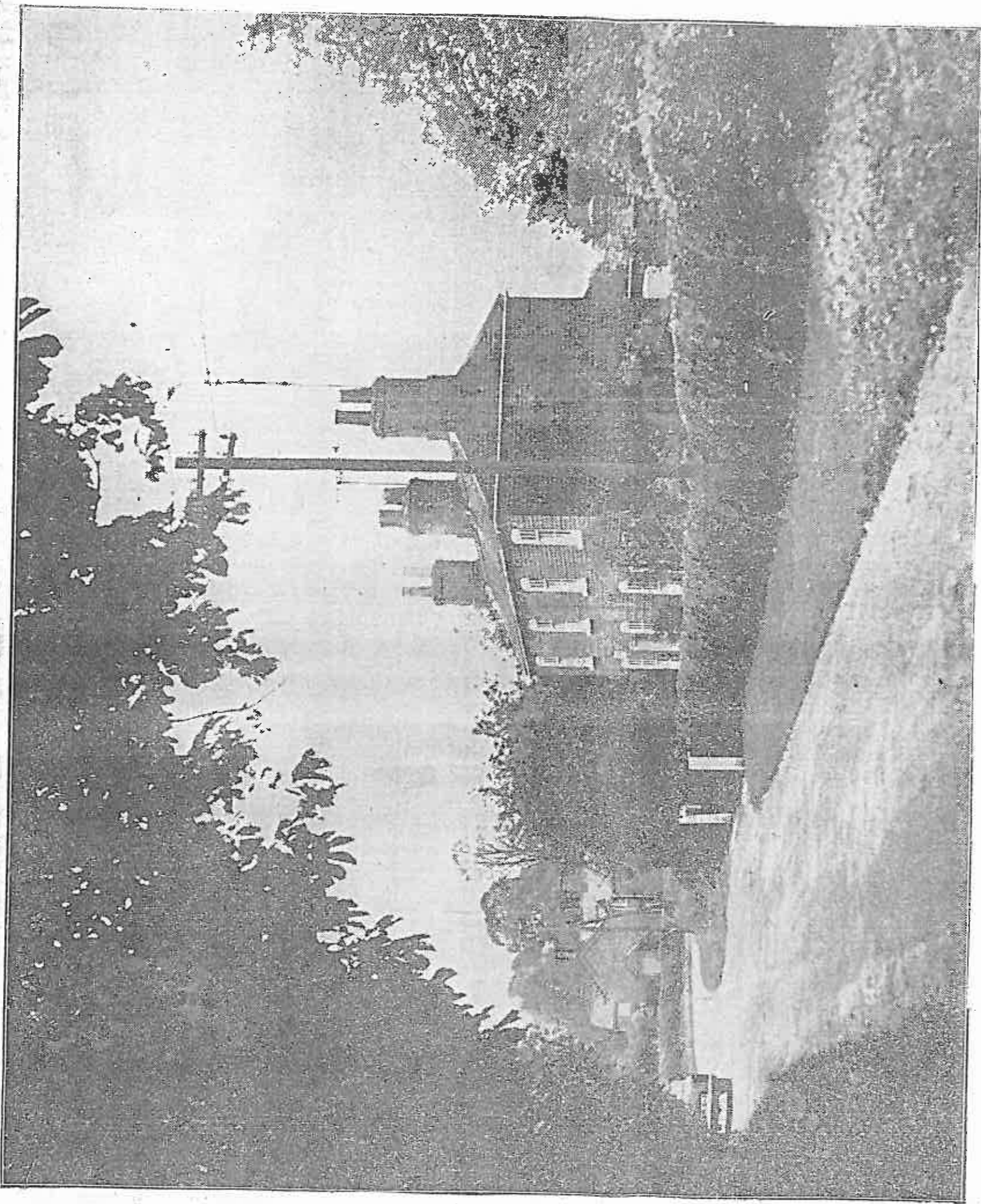


W600:914

LEAFY FRAME FOR VILLAGE IN THE WOLDS



The attractive little village of Wold Newton provides the "Do You Know Your Lincolnshire?" picture this week. Situated nine miles from Grimsby, it nestles in a valley on the road between Rayendale and Kelstern.

Evening Telegraph, October 20, 1961.